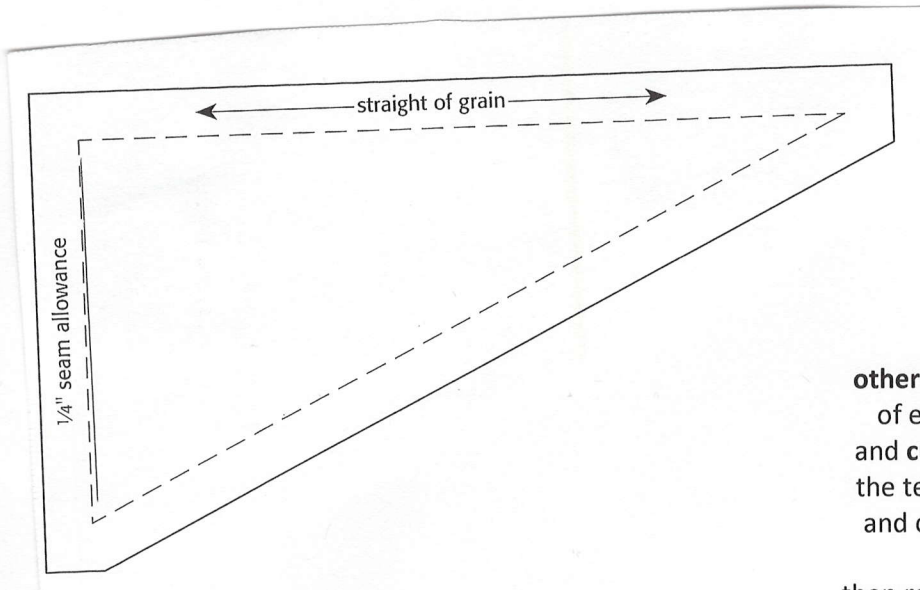


**“Bird of Paradise”**

12 inches finished  
12 ½ unfinished

All squares are 2 ½ inches. There are 8 white squares and 6 each of two other colors. You will need 2 rectangles strips of each fabric, **folded wrong sides together**, and **cut to 3 X 4 ½ inches**. Then you can place the template on the long side of the rectangle and cut your triangles. You get two triangles, one for each direction from the first cut, then rotate your template around, reline up on the other long edge and cut another set. That gives you four triangles total in the two non-white fabrics and 8 white triangles.

**See template above.** I trace mine onto 4ml stencil Plastic. I will have some precut plastic stencils at the April meeting! Remember by folding the fabric wrong sides together you can cut both directions of the triangles that you will need at once!



On the triangles I seam with a scant ¼ inch. Check your block measurements and adjust if needed before the next part! I suggest that you put all your four patches together first, note that there is a four-patch in the center of the block made with the two non-white colors. These should all measure at 4 ½ inches square! Next make your rectangles again by attaching the color triangles to their white triangles, note that the small end of the white triangle goes to the longer end of the colored triangle, these should end up being 2 ½ X 4 ½ inches! Make sure the straight edge of the triangle is next to its colored square as in the picture! Then following the picture for the first row take the same color triangle rectangle block as the color four patch and attach it to the four-patch, only two of the triangles will be able to attach correctly to any one of the four patches, remember you have both left and right facing triangles! Next sew the other colored four patch and colored triangle rectangle for the other side of the first row. Then you can attach the white part of the two rectangles together to make the first row. For the second row you will be sewing two of the triangle rectangle blocks together by sewing the white fabric together and then attaching them to the center four patch making sure color goes to the color matching itself. Recheck your row sizes they should be 12 ½ X 4 ½ inches trim if needed. Now you can sew row 1 to row 2. Then make row 3 noting that you will start with the opposite color as you did with row one but making it the same way as you did row 1, noting that triangle blocks are in the opposite direction. Size the row and when done sew it to the bottom of row 2. I pressed my seams open through out the entire block, it makes it easier to match points.