



Twinkling Wreath

This blocks' instructions includes one template

12 ½" unfinished

This block came from a twinkling star block pattern which I thought looked more like a wreath, so that's what I did with it just by changing the colors in the block.

You may use whatever colors you want in your blocks, because, well, they are your blocks, but my instruction will refer to my colors in my block so that you can follow along to make the block. Read once through before starting on the block!

Cut 2 squares at 4 3/8" of white, magenta, and purple fabrics, sub-cut all once diagonally.

Cut 4 additional squares at 2 3/8" of purple fabric.

Cut 8 squares at 2 5/8" of your green wreath fabric, sub-cut all once diagonally.

Cut 1 square at 5 ½" of your green wreath fabric. (The size of this needs to be correct. Measure it after you cut it!)

Cut 4 squares at 2 ½" of your yellow and blue fabrics.

We are going to work on the three sections of this block separately; center block, 4 yellow block corners, and 4 middle rectangles and then put them together, into 3 columns, and lastly sewing those together. Refer to the picture!

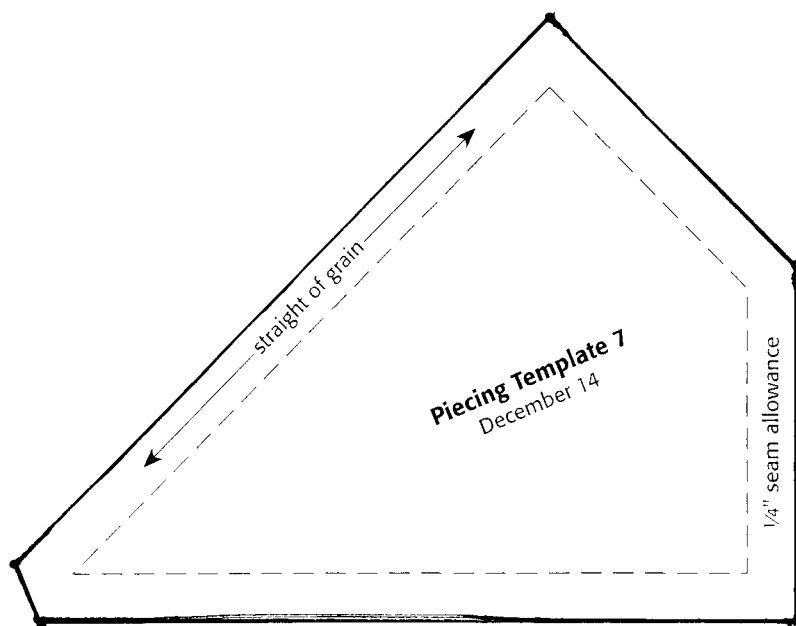
1) First we are going to "snowball" the 5 ½" **green square**, using the **4 squares** we cut from the **purple** fabric. Place one of the **purple 2" squares** in any corner of the **big 5 ½" green square** right sides together, sew across the inner corners of the purple block. Do the same with the remaining purple squares, in the remaining corners of the green square. Now trim the corners off the big square ¼" in, from the seams you just made, then fold the purple triangle up and press the seams open. You still have a 5 ½" **square**, but it now has **purple corners**! This is the **center block**, set it aside for now.

2) Next we are going to make the **four corners of the overall block**. Take 1 of the **green wreath triangles** and place it right side down on **1 of the yellow squares**, line up the side edge 90 degree point of the **green** triangle even with one of the 90 degree points, forming a straight line across the green triangle and down the side of the **yellow** square. Sew a ¼" seam down that side edge. Do the same to the other 3 yellow squares, then take all and press the seams open and trim the dog ears that stick out past the yellow square. Then turn them over to right side up again and take 3 more of the **green** triangles and match them to the adjoining side of the **yellow square**, where we trimmed the dog ear off, but line up on the opposite 90 degree point of the **yellow** square, so that both long edges of the **green** triangles are facing in the same direction. Sew down from the back 90 degree point down to the long edge of the green triangle in the front. Press the seams open and trim the resulting dog ear. The **green** triangles should have overlapped each other giving you a ¼" inch seam allowance on the new long edge of this 3 part triangle. Take your new larger 3 part triangles right side up and using a ruler, make sure you have a ¼" seam allowance above where the green triangle points overlapped the **yellow** square corner. I take the two outside points of the **green** triangles and make sure they are 1/4" above the edge of the yellow square as well and then trim any excess green fabric on that long edge. You usually are just trimming excess in the center of the long edge of the 3 part triangle. Now take one of the white triangles and place it right side down on the 3 part triangle, line up the back 90 degree corner of the **yellow** square to the back 90 degree point of the **white** triangle, then flip it over and pin at the front corner of the **yellow** square right through the seam point where the two green triangles crossed

over the **yellow** square, then pin the two outside corners of the **green** fabric points to the outside corners of the **white** fabric about a $\frac{1}{4}$ " down from the end points, all with ultra thin pins and I sew my $\frac{1}{4}$ " seam right through those points. Press seams open. Trim to **4 $\frac{1}{4}$ " square, lining up your 45 degree angle of your ruler down the seam you just made.** Your **four corner units** are now done. Set aside.

3) Now we will tackle the **4** middle units. We again start with making a 3 part triangle, but this time with the **4 blue squares** and the **remaining 8 green triangles**, make these exactly as you did for the **yellow 3 part triangles** in step 2.

Set aside momentarily, while we use the template below to trim our purple triangles. Place the long edge of your **purple** triangle down, and line up the straight of grain side of the **template** on the **left** side of the **purple** triangle, with 90 degree corner at the end of template with the straight of grain marking on it, lined up at the 90 degree corner of the purple triangle, not on the long edge (which is the bias edge). You will trim off the dog ear of the **purple** triangle on the **left** end of the long edge and a chunk forming a small triangle from the other end of the long edge of the purple triangle. You will **not** use this small purple trimmed off triangle. Next retrieve your **blue** three part triangle and place it right side up, long edge to the left, place **trimmed purple** triangle piece, right side down, on the bottom side edge of the blue 3 part triangle, and match that back corner of the **trimmed purple** piece to the back corner of the **blue** 3 part triangle so the back ends of both pieces are even and pin with the ultra thin pins through the center seam of the 3 part **blue** triangle and two opposite ends of that side and sew your seam. Press open and trim. Next take one of your **magenta** triangles and place it right side down, lining up the long edge of the **magenta** triangle down the other side of the 3 part **blue** triangle and continue down, ending up even to the end where we cut the small triangle off the **purple** trimmed triangle. Sew your $\frac{1}{4}$ " seam. Press seam open.



Trim this unit to **4 $\frac{1}{4}$ " X 5 $\frac{1}{2}$ "**. Do the same with the other 3 part **blue** triangle units, and remaining **purple** and **magenta** triangles. You have now made the **4 side center units**.

Note: the two long edges are **4"s**, and the two short edges are **1 $\frac{3}{4}$ "s**. **90 degree angle is at the top right straight of grain edge on this template.** Make sure you print this at "actual size"!

4) Next we put the sub blocks together. Take one of the **side center rectangle units** and place it right side up, with the 3 part **blue** triangle to the **left** side of the rectangle and then get one of the 3 part **yellow triangle corner units** and place it right side down on top of the **magenta** triangle in the **side center unit**, **Yellow square** to the **right** side of the **magenta** triangle, pin points, and sew your $\frac{1}{4}$ " seam, Press seam open. Turn right side up again with **purple** piece on the bottom, then take another 3 part **yellow square triangle corner unit** and place it right side up **yellow square** on **right** side, below the **purple** bottom of the **center rectangle**, flip it up, right sides together lining up the right edge of the **blue** square even with the right edge of the **purple** trimmed piece of the **center rectangle unit**. Pin points along the bottom edge and sew seam. Press seam open. Repeat once for 2 completed **side column units**. Check against picture. Set aside.

5) Now retrieve your **center snowballed square** right side up. Place one of the 2 remaining center rectangle units right side up above the **snowballed center square**, with the **purple** triangle to the left side and the **magenta** triangle to

the right side of the top of the **snowballed center square**. Flip the **center rectangle unit** right side down onto the **snowball unit** and pin along the top matching points making sure they match up at the seam points, especially of the **purple** pieces, thus completing the **purple** triangle again. Remember the seams should match not at the edge but at the $\frac{1}{4}$ " seam points of the unit. Do the same with the last side center rectangle but lining up on the bottom of the **snowballed center square**, this time with the **magenta** piece on the **left** and the **purple** piece on the **right**, and the **blue** 3 part triangle's long edge down. Again pin along the points making sure they match up at the $\frac{1}{4}$ " seam points of the **purple** pieces, thus completing the **purple** triangle again. You have now completed the **center column of the block**.

- 6) Now we sew the three columns together. Take one of the of the **step 4 side column units** and place it right side up to the left of the completed **center column unit from step 5**, right side up. Both **Yellow** squares in the side column should be on the **right** side of the **side column unit** and next to the **left** side of the **Center column unit**. Flip the side column unit onto the center column unit, Pin points making sure your **purple** points meet at the seam line, and sew your $\frac{1}{4}$ " seam down the **left** side. Press seam open. Place unit right side up. Lastly get your second side unit and flip it around so that it is right side up with the **yellow** squares next to the **right** side of the **center column**, and the 3 part **blue** triangle in the middle faces long edge out. Flip it over right side down onto the center column and this time match points down that right side edge and sew your seam. Press open. You should be done!